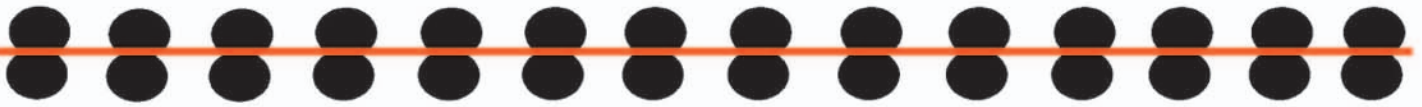


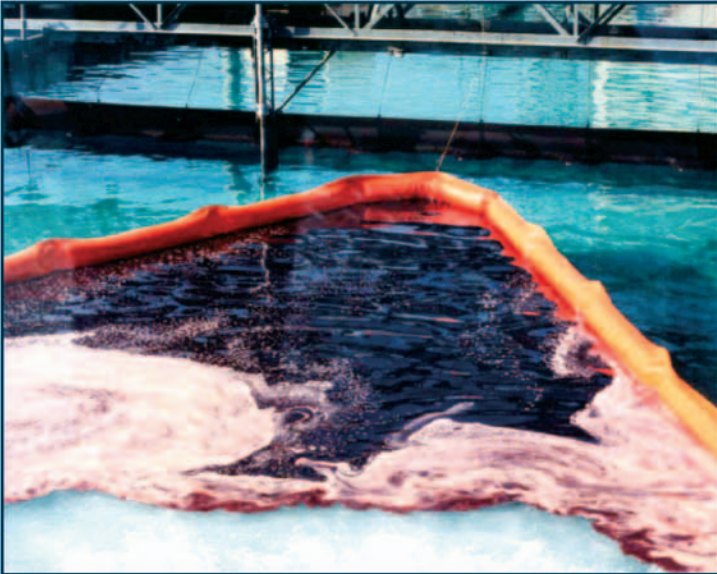


Applied Fabric Technologies Inc.

Oil Spill Containment Systems and Components



Contractors Special "CS" Boom



AFTI, your oil spill containment solution company.

- Site Assessment and System Design.
- Oil Spill Equipment Design, Manufacture, Acquisition, and Integration.
- Installation and Training.

AFTI is the worldwide company to call for your complete oil spill containment needs.

SOLD BY:



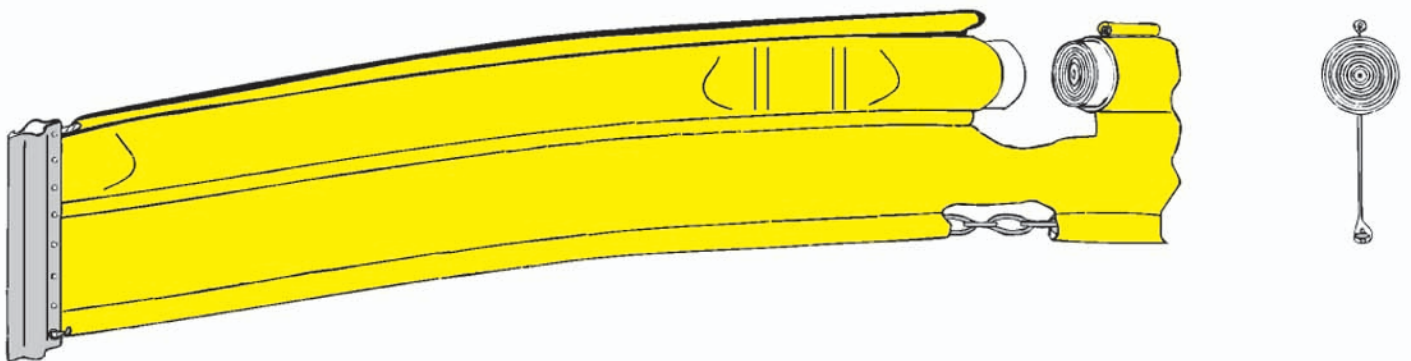
Contractors Special Boom "CS" Boom

Applied Fabric Technologies, Inc. (AFTI) continues its tradition of applying superior fabrics to the requirements of the oil pollution control industry. AFTI's "CS" Boom is specifically designed to meet the oil spill response contractor's needs for performance and cost containment. AFTI "CS" Boom leads the way in quality by using only welded seams. Hot dipped galvanized, proof coil chain is used exclusively to provide longer corrosion resistance. A free floating cable inside a welded sleeve is available for reducing fabric load and abrasion.

Since applications have different needs, "CS" Boom is available in a variety of fabrics. These include traditional PVC from 22 oz. to 30 oz. per square yard, several Elvaloy, and a 28 oz. Polyurethane. AFTI's wide range of fabrics provides the customer with a boom tailored to their specific circumstances.

Other options available on "CS" Boom include stainless steel cable, variable draft and float dimensions, and a wide range of end connectors to match your specific requirements. Flat float ("L" models) and inflatable models are available too.

Should your operating conditions extend beyond the capabilities of "CS" Boom, AFTI's time proven and cost effective OILFENCE™ and GLOBEBOOM® containment systems can be tailored to meet your requirements. Ask your AFTI representative for a brochure.



STANDARD "CS" BOOM SPECIFICATIONS (CUSTOM SIZES AVAILABLE)				CONSTRUCTION
Model	18"	24"	36"	Fabric: PVC, Polyurethane or Elvaloy End Connectors: ASTM Aluminum extrusion (other styles available) Flotation: Rolled Polyethylene or solid foam logs in float pocket Seams: R.F. welded or heat welded Support Cable: galvanized or stainless steel Ballast: Galvanized chain Color: Yellow, orange, black and others are available
Total Height	20"	26"	38"	
Draft	12"	16"	24"	
Freeboard	6"	8"	12"	
Ballast - Chain	5/16"	5/16"	5/16"	
Float Diameter	6"	8"	12"	
Tensile Strength	15,000 lbs.	18,000 lbs.	25,000 lbs.	
Weight Lbs./Ft.	2.2	2.3	3.1	

Applied Fabric Technologies, Inc. • PO Box 575 • 227 Thorn Ave. • Orchard Park, NY 14127 USA
716.662.0632 • Fax 716.662.0636 • www.afti.com • info@AFTI.com

BOOMREEL®, OILFENCE™ and GLOBEBOOM® are registered trademarks of Applied Fabric Technologies, Inc.